

COMING SOON

sponsorship opportunities available



Kingdom Connections



**Your Ultimate Guide To
Strengthening Your Kingdom
Business Through Faith Based
Collaboration**

Why Faith-Based Connections Matter

*"For where two or three gather in my name, there am I with them."
- Matthew 18:20*

Did you know that 55% of Christians in America do not have a home church? Or that the faith community spends \$1.2 trillion annually?

As churches, ministries, nonprofits, and businesses, we are united by a shared mission: advancing God's Kingdom. Yet, connecting with the right people—whether it's congregants, volunteers, or faith-based customers—can be challenging in today's secular landscape.

Excellence Directory is a platform designed to foster Kingdom connections, bridging the gap between churches, ministries, businesses, and individuals who share a commitment to biblical principles. This guide will show you how joining [App Name] can amplify your impact, grow your network, and create lasting relationships built on trust and shared faith.



The Benefits of Connecting with a Faith-Based Community

1. Partner with Values-Aligned Individuals and Organizations

Whether you're a church seeking to grow your congregation or a business looking to serve faith-based customers, partnering with like-minded individuals strengthens your mission. These connections go beyond transactions—they become partnerships in advancing God's Kingdom.

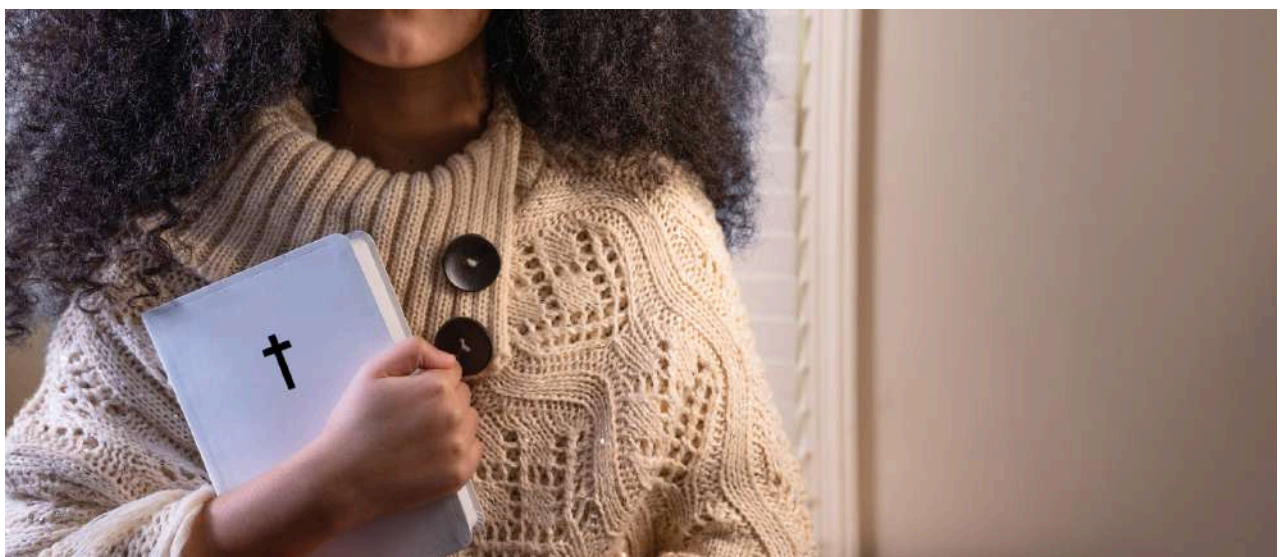
2. Reach More Souls and Clients

Churches can gain visibility among thousands of Christians seeking a home church or ministry, while businesses can connect with loyal customers who prioritize integrity and biblical values.

3. Build a Kingdom Network

Strengthen the Christian community by collaborating with churches, ministries, nonprofits, businesses, and professionals who share your goals. Together, we can foster relationships that inspire growth and service.

"He said to them, 'Go into all the world and preach the good news to all creation'. - Mark 16:15



How Churches and Charities Can Thrive on Excellence

1. Attract Members and Volunteers

Share your mission, upcoming events, and volunteer opportunities to engage believers who are eager to support your work.

2. Amplify Your Testimony

Use your profile to share stories of transformation and testimonies that inspire others. Highlight how your church or ministry is making a difference through Christ.

3. Access Trusted Services

From event planners to financial advisors, connect with businesses that understand the unique needs of Kingdom work.



How Christian Businesses Can Grow with Faith-Based Customers

1. Highlight Your Commitment to Faith

Steward your business with excellence and ensure your profile reflects your biblical values. Customers want to know your faith is central to your operations.

2. Build Loyalty Through Integrity

Faith-based customers are more likely to trust businesses that align with their values, creating opportunities for long-term relationships.

3. Thrive in a Values-Aligned Marketplace

From family services to professional industries, faith-based connections can transform your business into a trusted pillar of the community.

"And God will generously provide all you need. Then you will always have everything you need and plenty left over to share with others." Corinthians 9:8



How Excellence Supports Your Mission and Business

1. Create a Tailored Profile

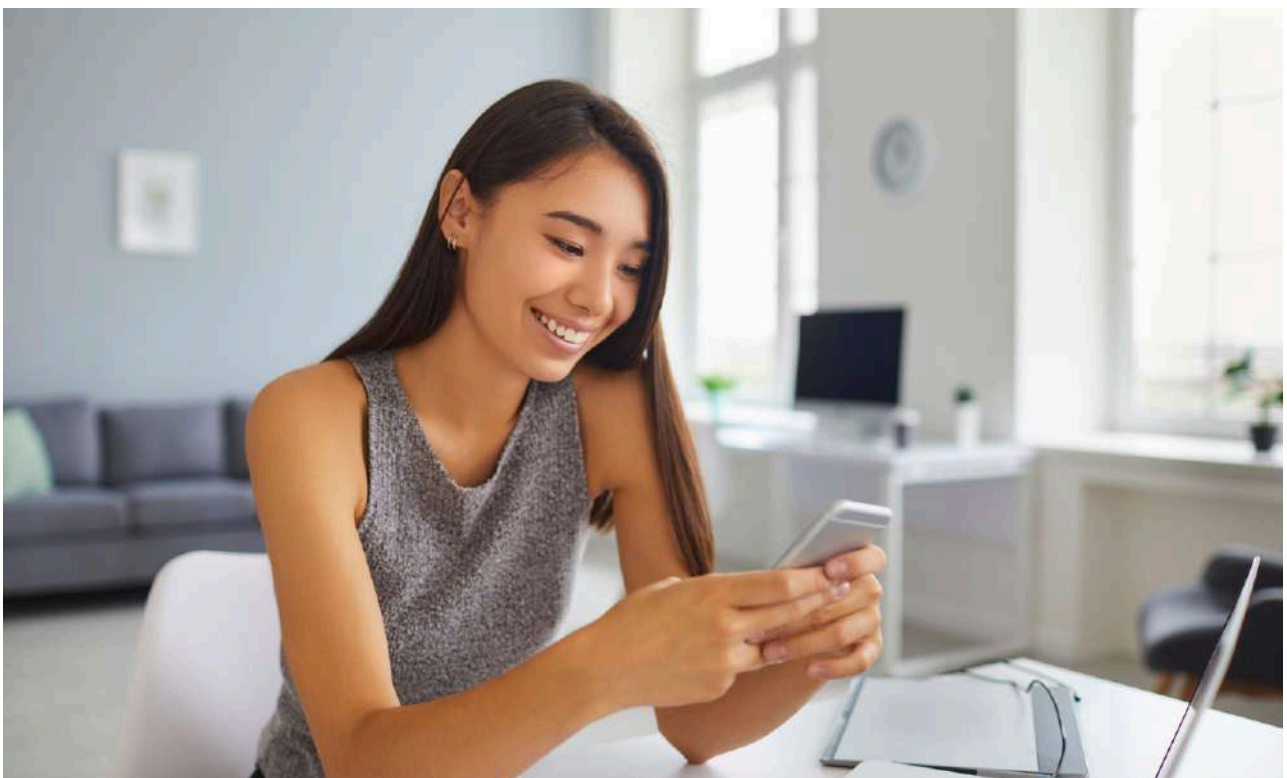
Showcase your mission, services, and testimonials to attract supporters and customers who resonate with your values.

2. Engage with Verified Connections

Build confidence by connecting with a trusted, faith-centered community.

3. Expand Your Reach

Whether you're growing a church, recruiting volunteers, or building a business, [App Name] simplifies the process of finding the right connections.



Steps to Get Started

1. Create a Compelling Profile

Include your mission statement, testimonies, and opportunities for engagement.

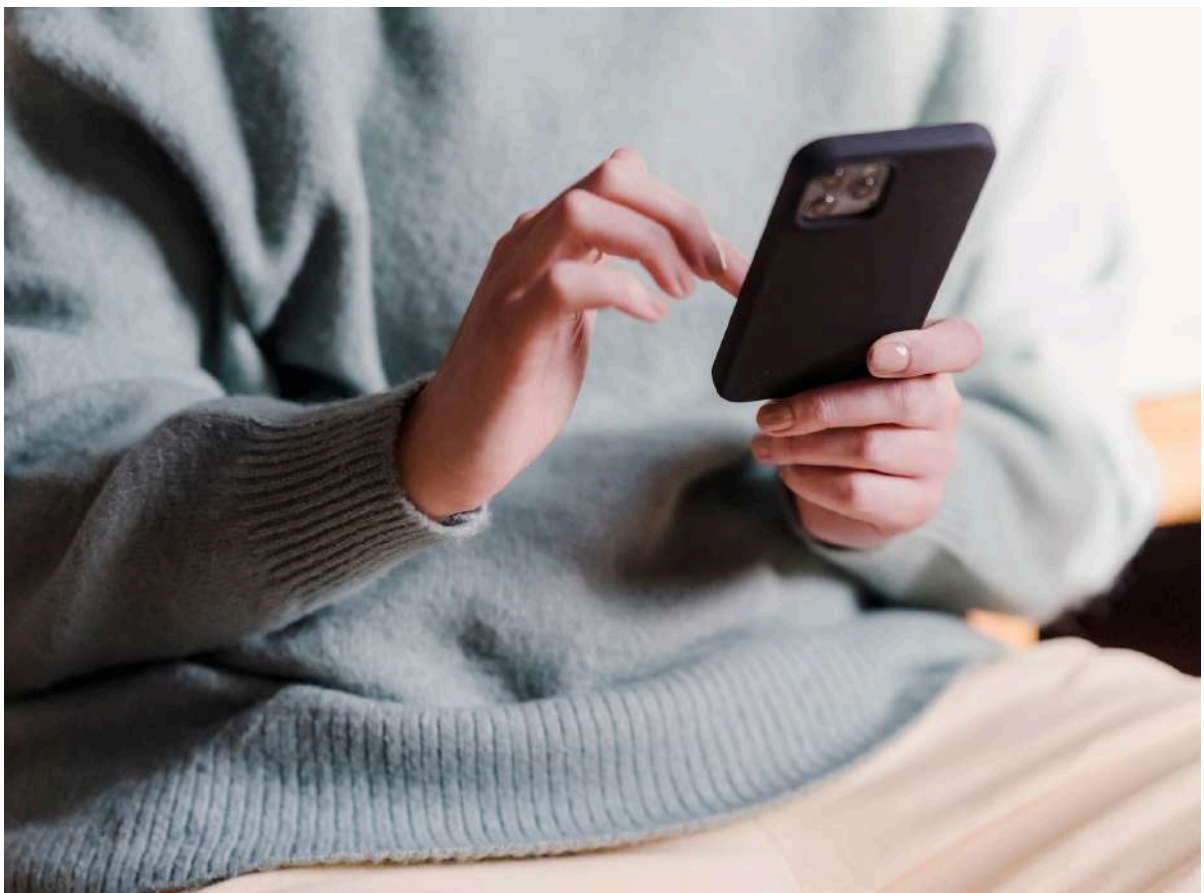
2. Spread the Word

Encourage your congregation, supporters, or customers to join the platform and share their experiences.

3. Maximize Your Presence

Regularly update your profile with new testimonies, offerings, or events.

"Whatever you do, work at it with all your heart, as working for the Lord, not for human masters." - Colossians 3:23



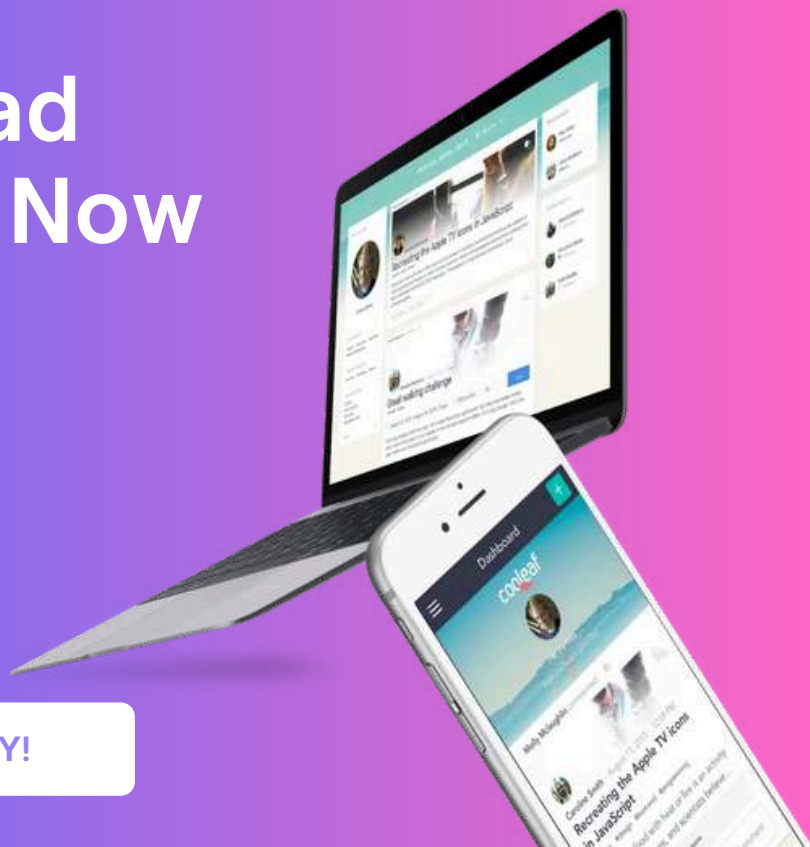
Strengthening the Kingdom Through Faith-Based Connections

Joining [App Name] is more than a networking opportunity—it's a chance to advance God's Kingdom by building relationships rooted in faith, trust, and collaboration. Whether you're a church, ministry, or business, [App Name] empowers you to connect with a vibrant community that shares your passion for service and excellence.

Download the App Now



SIGN UP TODAY!



Let's transform lives, grow together, and build the Kingdom, one connection at a time.

Become a Founding Partner & Elevate Your Business in the Christian Marketplace!

Sponsoring the Excellence Directory is a powerful way to gain premium visibility, attract faith-driven customers, and establish your business as a leader in the Christian community.

As a Founding Partner, your brand will be showcased to thousands of believers actively seeking businesses that align with their faith and values.

Why Become a Sponsor?

1. Exclusive Visibility

Be featured prominently in the top sections of the directory and search results.

2. Targeted Exposure to Christian Customers

Get in front of a faith-driven audience actively seeking businesses like yours.

3. Social Media Promotion

Your business will be featured across our high-engagement social media platforms.

4. Brand Authority & Trust

Stand out as a trusted, faith-aligned brand in a growing Christian business network.

5. TV Interview & Media Coverage

Gain premium exposure through a 28-minute television feature on Kingdom Connections!

6. Newsletter Spotlight

Be regularly featured in our monthly business and faith community newsletter.

Founding Partner Sponsorship – Limited Availability!

1. Premium Website & App Placement

Your business will be highlighted as a trusted, featured service.

2. Social Media Features & Promotions

We'll showcase your brand to our engaged Christian audience.

3. TV Interview on Kingdom Connections

A full 28-minute segment to tell your story and promote your services.

4. Featured in Our Monthly Newsletter

Reach thousands of faith-driven business owners and consumers.

5. Logo Placement on All Promotional Materials

Get maximum exposure in all our digital and printed campaigns.

6. Exclusive Business Networking & Growth Opportunities

Connect with top Christian entrepreneurs and faith-driven professionals.

Want to Take It Even Further?

We offer custom sponsorship packages tailored to your business's unique goals and audience.

Ready to expand your impact in the Christian business community? Email us today to receive full sponsorship details!

Blessings,

Geeta Chopra

Founder, Excellence Directory

support@excellentedirectory.com

www.excellencedirectory.com

***Commit to the Lord whatever you do, and he will establish your plans.”
– Proverbs 16:3***